

MEDITERRANEAN SEA

HEBRON

BE'ER SHEVA'

DIMONA

Grar River

Besor River

Hebron River

Be'er Sheva River

**Hydrology**

- Streams
- Watershed Boundary

**Municipalities**

- Municipalities

**Administrative Areas**

- Area A
- Area B

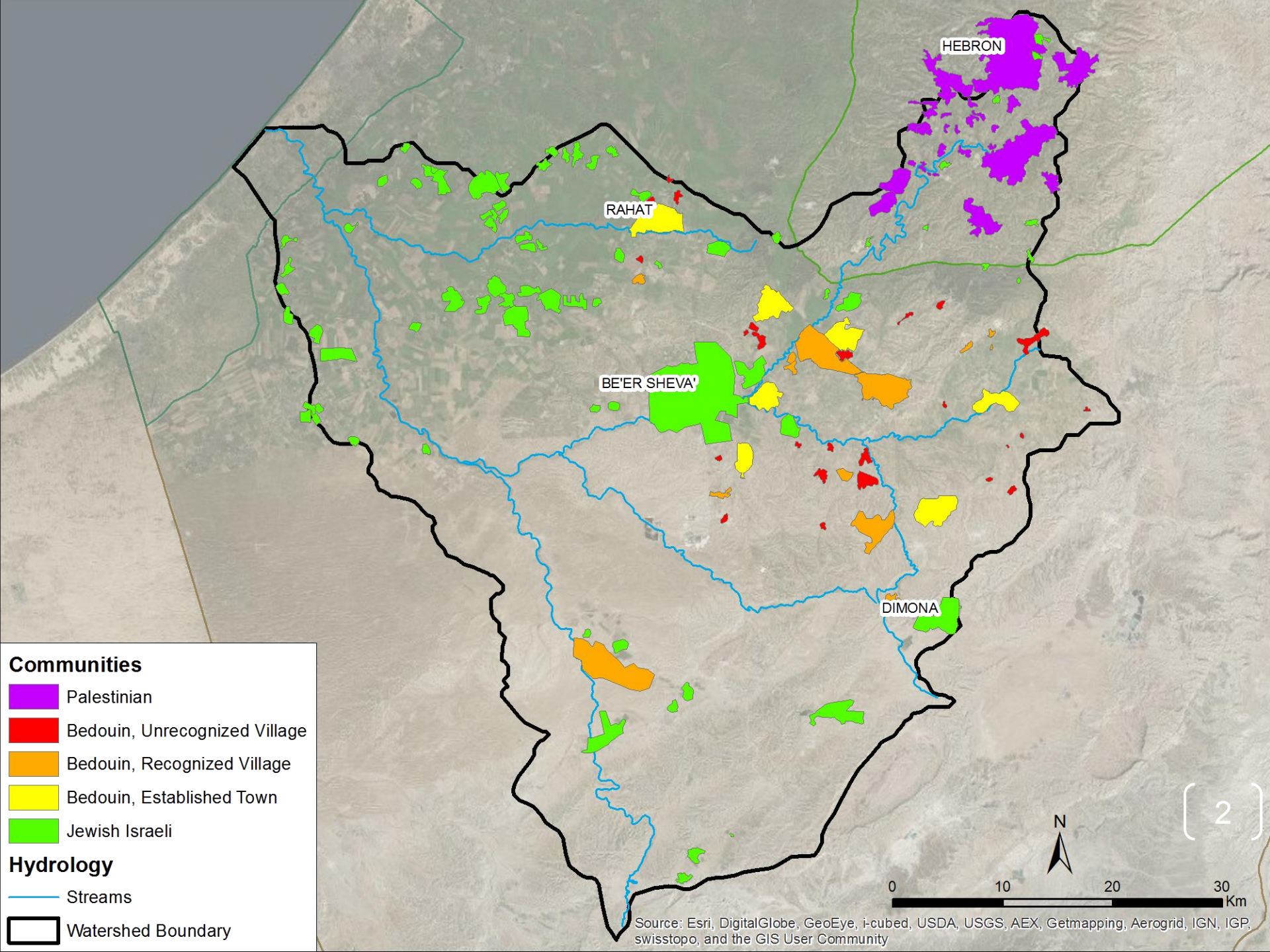
**Governant Regions**

- Palestine - West Bank
- Israel - Natural Regions
- Palestine - Gaza



1

Source: Esri, DigitalGlobe, GeoEye, i-cubed, USDA, USGS, AEX, Getmapping, Aerogrid, IGN, IGP, swisstopo, and the GIS User Community



HEBRON

RAHAT

BE'ER SHEVA'

DIMONA

2

**Communities**

- Palestinian
- Bedouin, Unrecognized Village
- Bedouin, Recognized Village
- Bedouin, Established Town
- Jewish Israeli

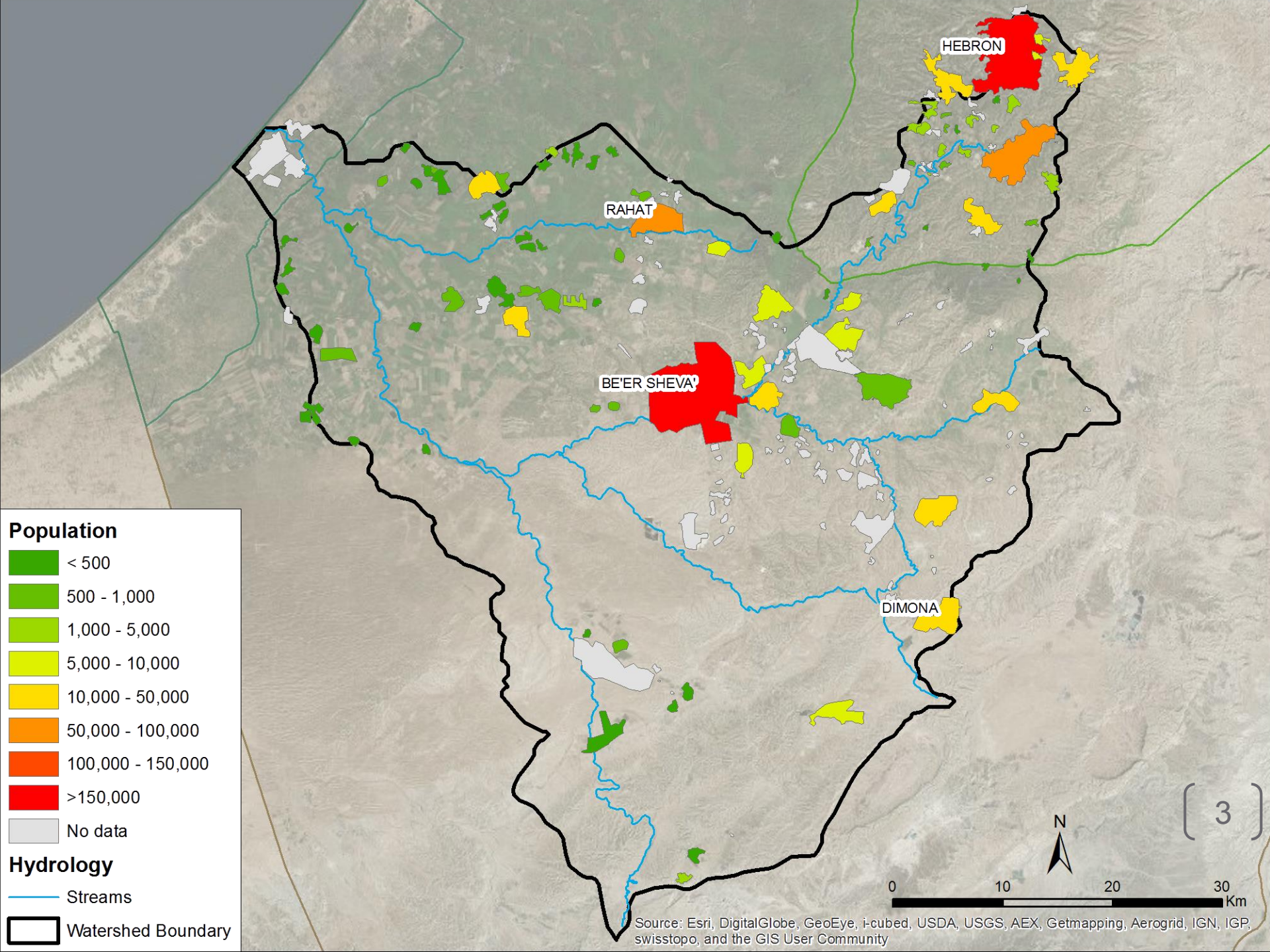
**Hydrology**

- Streams
- Watershed Boundary

0 10 20 30 Km

N

Source: Esri, DigitalGlobe, GeoEye, i-cubed, USDA, USGS, AEX, Getmapping, Aerogrid, IGN, IGP, swisstopo, and the GIS User Community



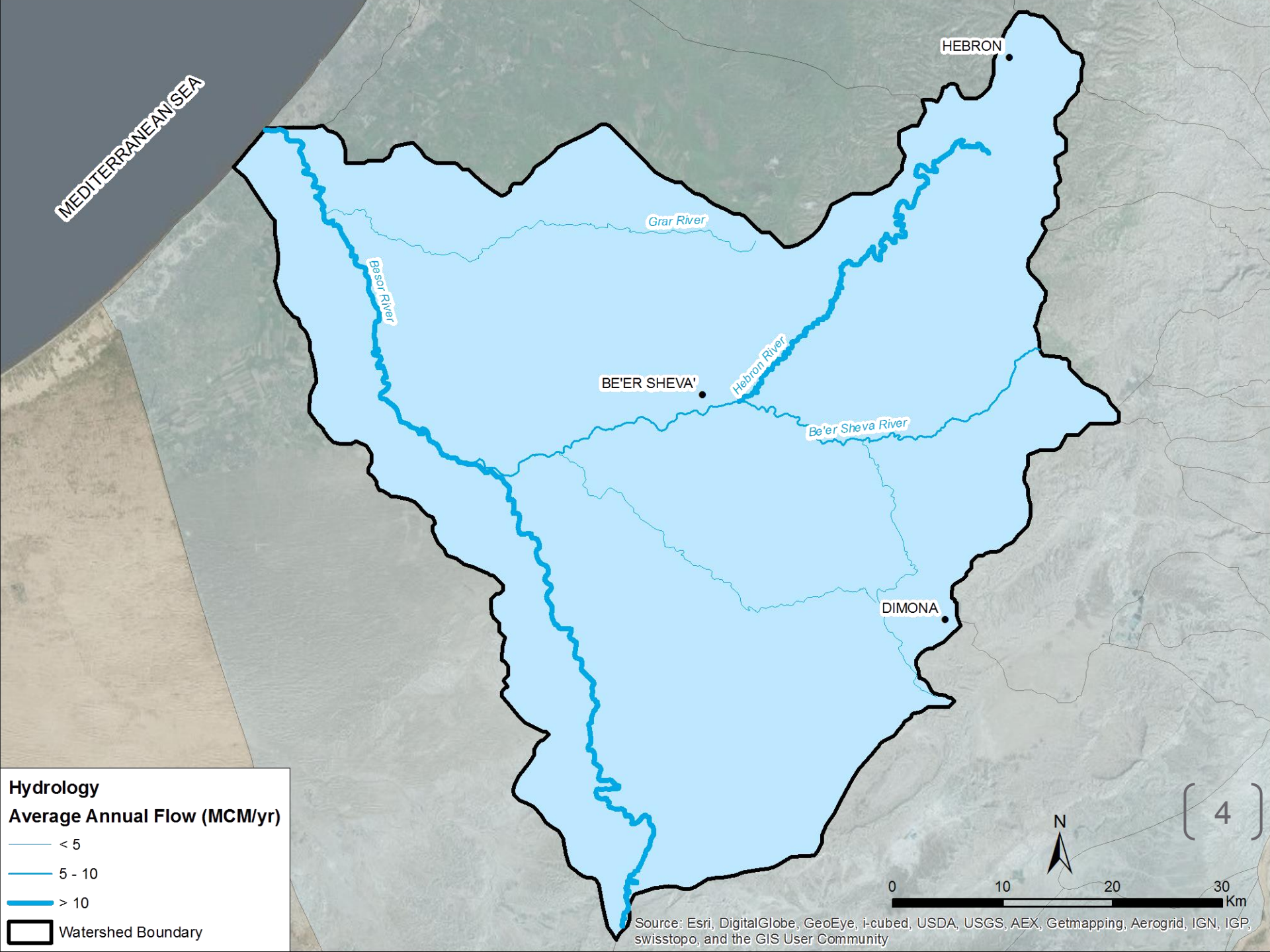
**Population**

- < 500
- 500 - 1,000
- 1,000 - 5,000
- 5,000 - 10,000
- 10,000 - 50,000
- 50,000 - 100,000
- 100,000 - 150,000
- >150,000
- No data

**Hydrology**

- Streams
- Watershed Boundary

Source: Esri, DigitalGlobe, GeoEye, i-cubed, USDA, USGS, AEX, Getmapping, Aerogrid, IGN, IGP, swisstopo, and the GIS User Community



MEDITERRANEAN SEA

HEBRON

Grar River

Besor River

BE'ER SHEVA

Hebron River

Be'er Sheva River

DIMONA

**Hydrology**

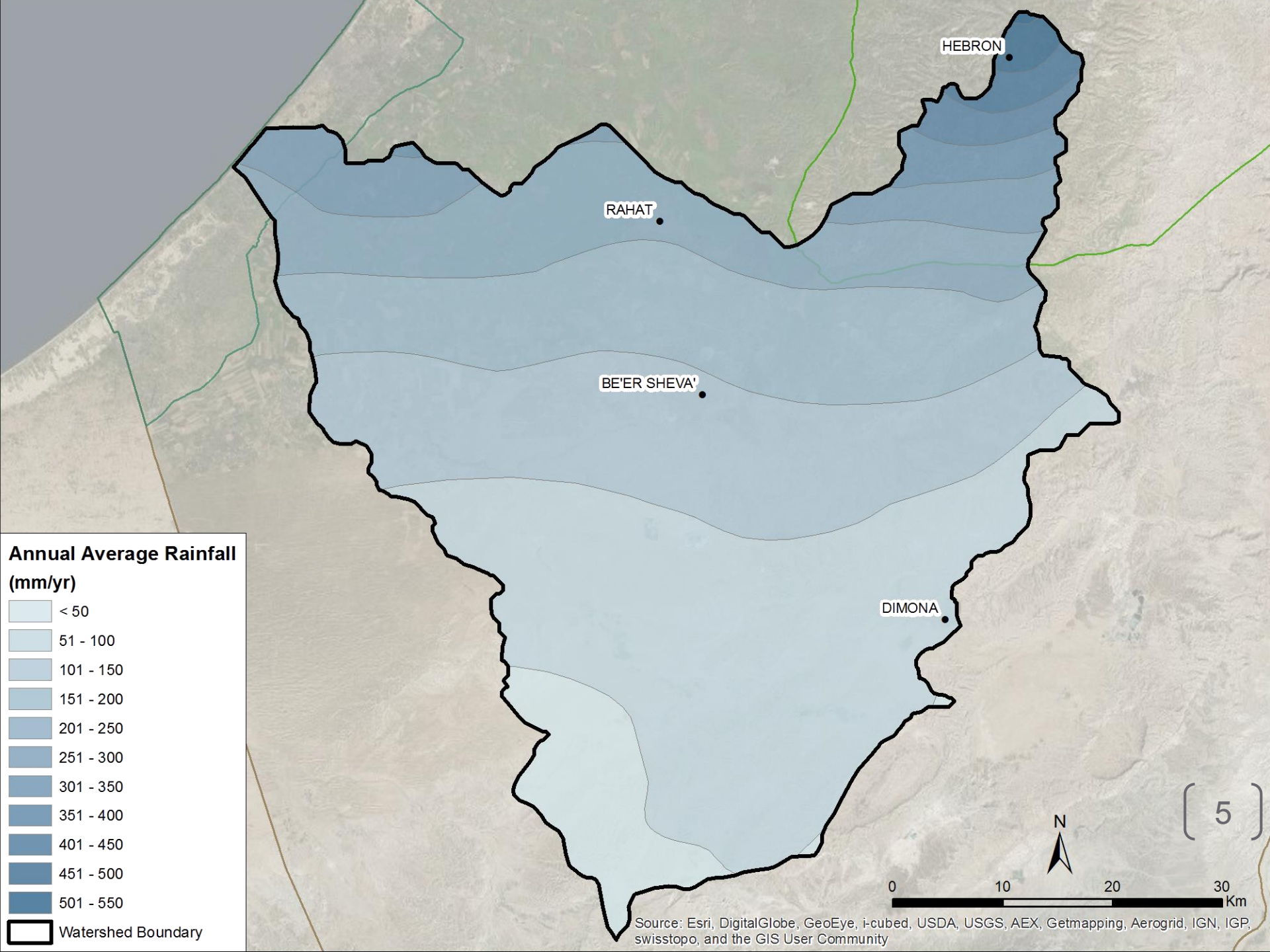
**Average Annual Flow (MCM/yr)**

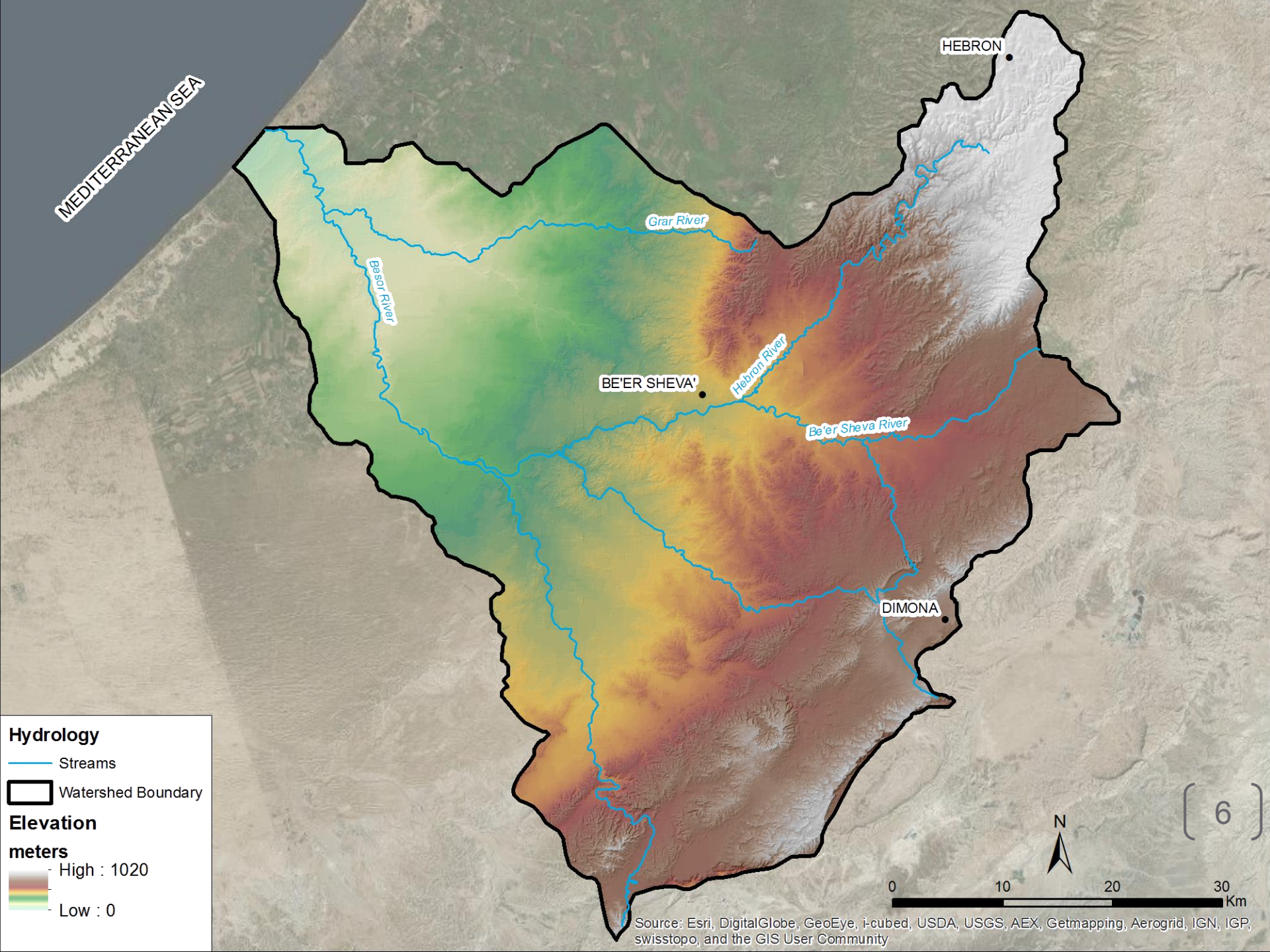
- < 5
  - 5 - 10
  - > 10
- Watershed Boundary

4



Source: Esri, DigitalGlobe, GeoEye, i-cubed, USDA, USGS, AEX, Getmapping, Aerogrid, IGN, IGP, swisstopo, and the GIS User Community





MEDITERRANEAN SEA

HEBRON

Grar River

Besor River

BE'ER SHEVA'

Hebron River

Be'er Sheva River

DIMONA

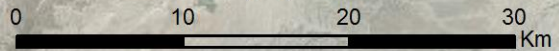
**Hydrology**

- Streams
- Watershed Boundary

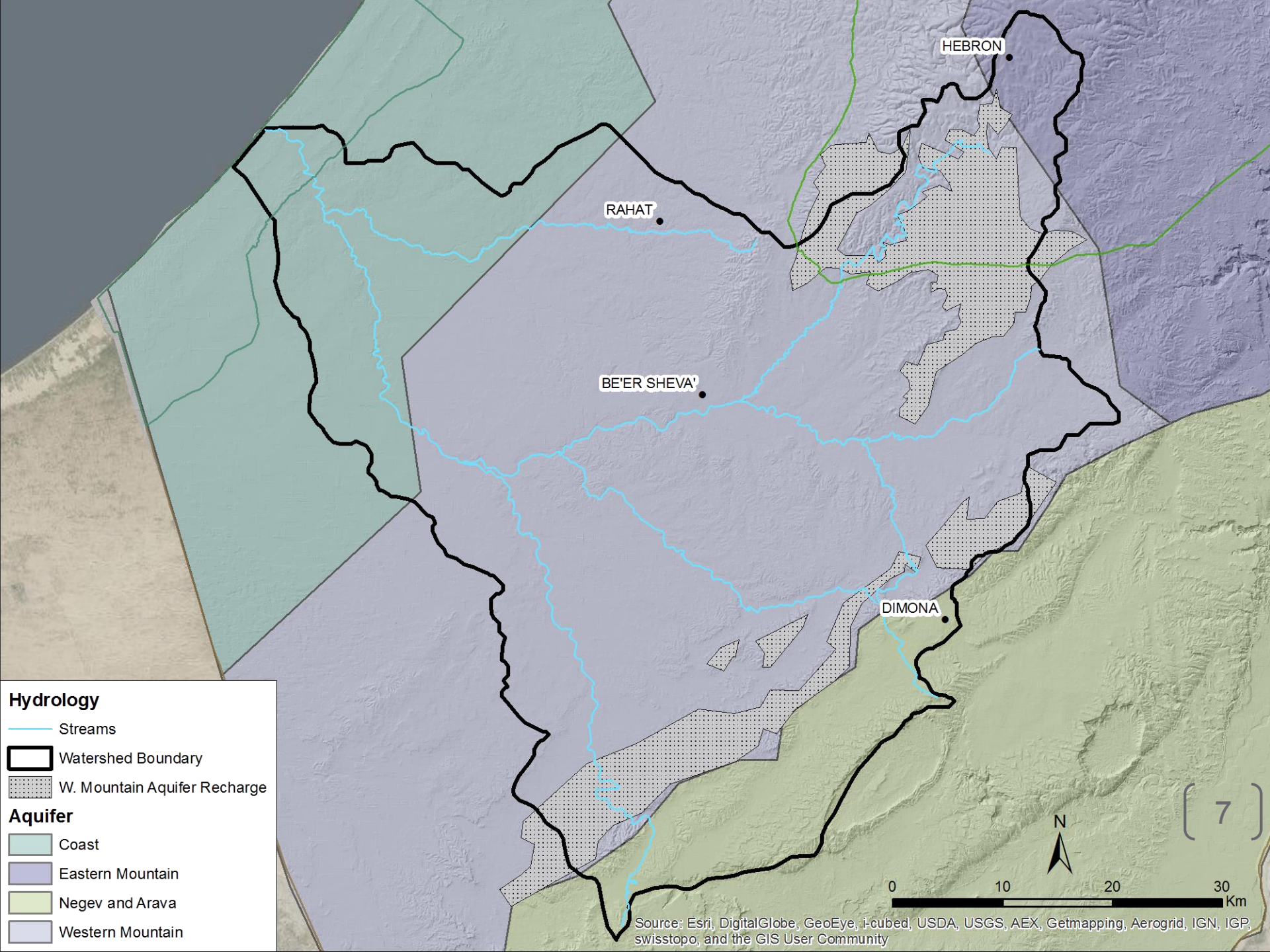
**Elevation**  
meters

- High : 1020
- Low : 0

( 6 )



Source: Esri, DigitalGlobe, GeoEye, i-cubed, USDA, USGS, AEX, Getmapping, Aerogrid, IGN, IGP, swisstopo, and the GIS User Community



HEBRON

RAHAT

BE'ER SHEVA'

DIMONA

**Hydrology**

- Streams
- Watershed Boundary
- W. Mountain Aquifer Recharge

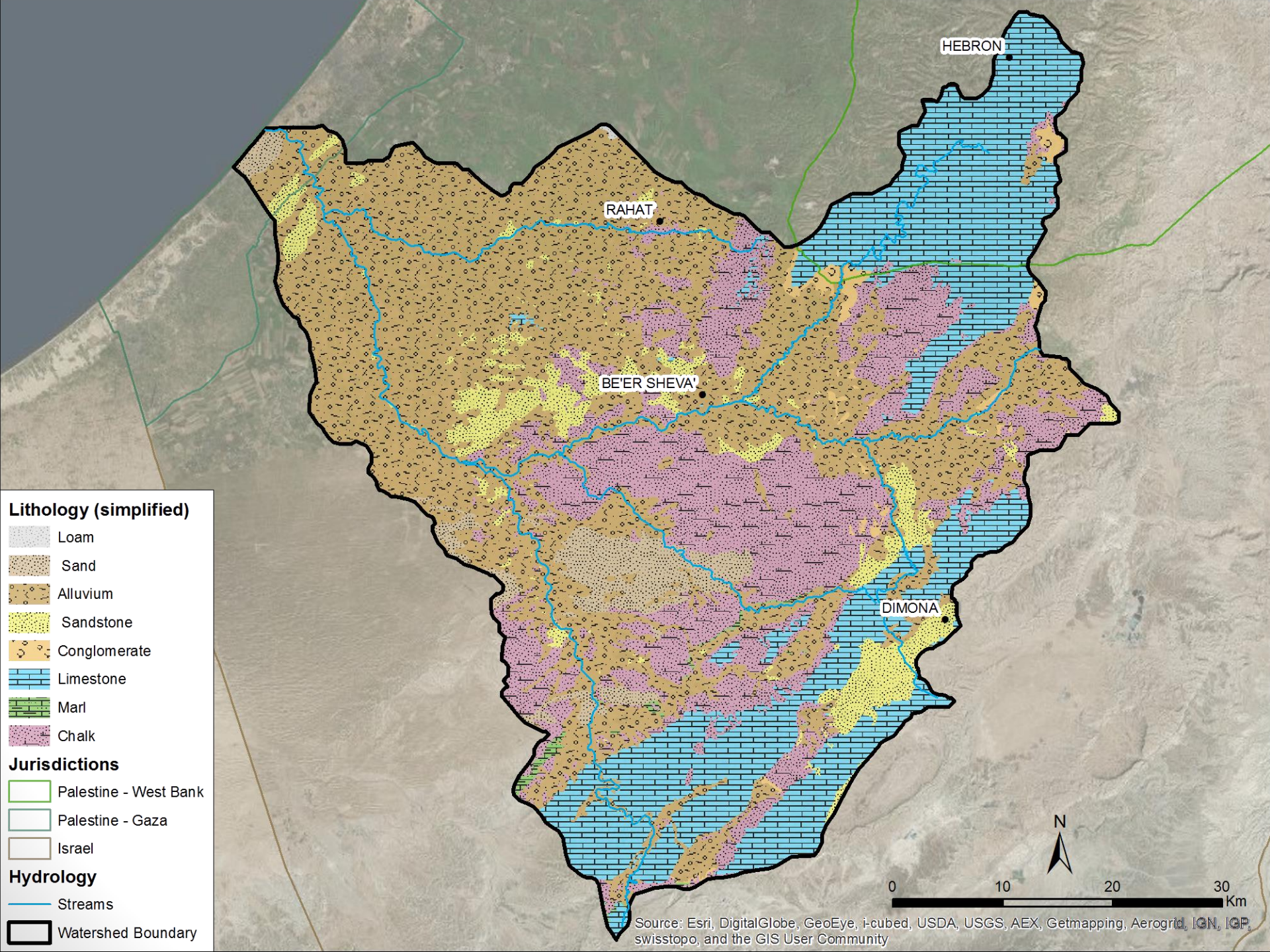
**Aquifer**

- Coast
- Eastern Mountain
- Negev and Arava
- Western Mountain

0 10 20 30 Km

Source: Esri, DigitalGlobe, GeoEye, i-cubed, USDA, USGS, AEX, Getmapping, Aerogrid, IGN, IGP, swisstopo, and the GIS User Community

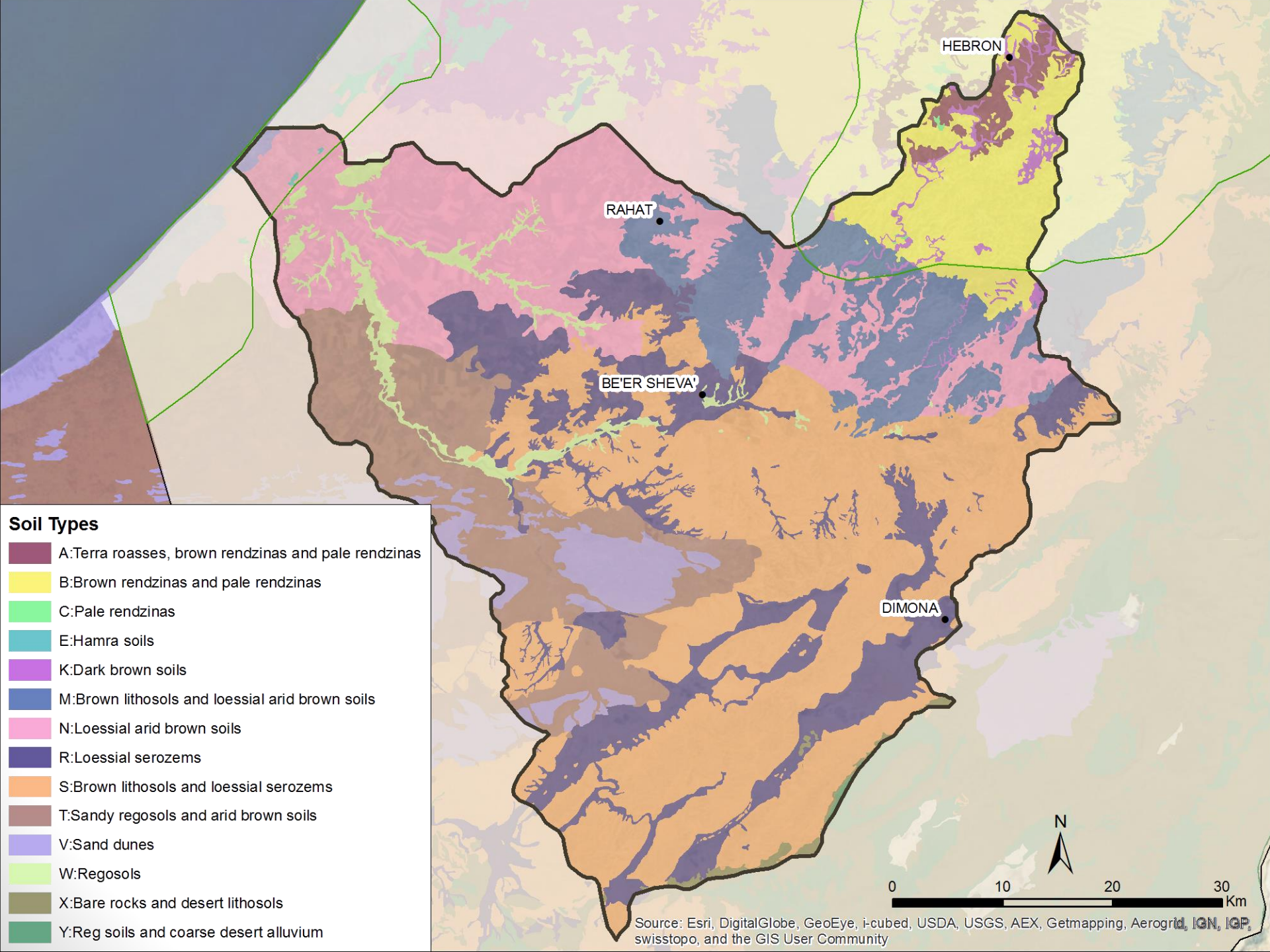
( 7 )



- Lithology (simplified)**
- Loam
  - Sand
  - Alluvium
  - Sandstone
  - Conglomerate
  - Limestone
  - Marl
  - Chalk
- Jurisdictions**
- Palestine - West Bank
  - Palestine - Gaza
  - Israel
- Hydrology**
- Streams
  - Watershed Boundary

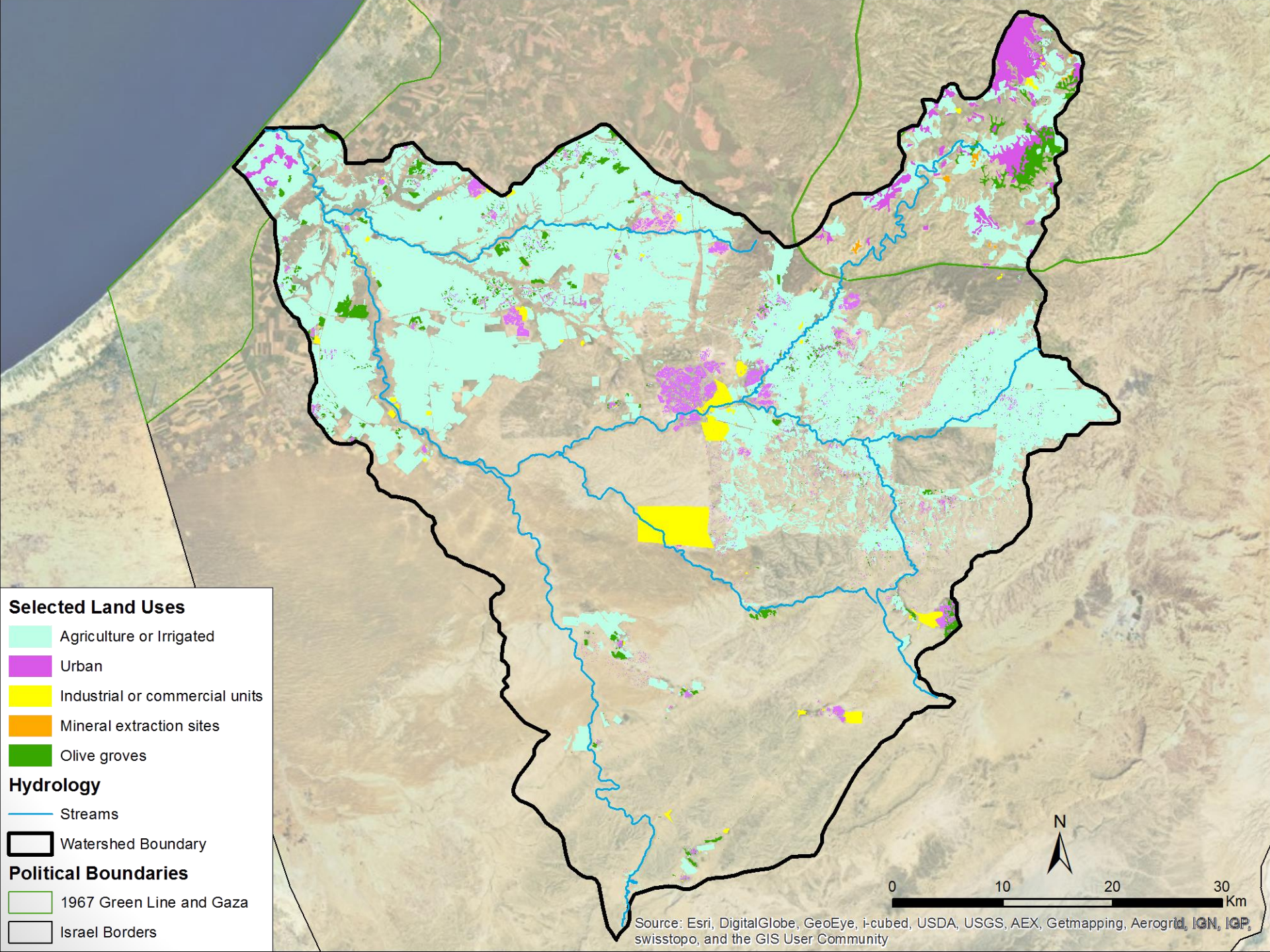
Source: Esri, DigitalGlobe, GeoEye, i-cubed, USDA, USGS, AEX, Getmapping, Aerogrid, IGN, IGP, swisstopo, and the GIS User Community





- Soil Types**
- A: Terra roasses, brown rendzinas and pale rendzinas
  - B: Brown rendzinas and pale rendzinas
  - C: Pale rendzinas
  - E: Hamra soils
  - K: Dark brown soils
  - M: Brown lithosols and loessial arid brown soils
  - N: Loessial arid brown soils
  - R: Loessial serozems
  - S: Brown lithosols and loessial serozems
  - T: Sandy regosols and arid brown soils
  - V: Sand dunes
  - W: Regosols
  - X: Bare rocks and desert lithosols
  - Y: Reg soils and coarse desert alluvium

Source: Esri, DigitalGlobe, GeoEye, i-cubed, USDA, USGS, AEX, Getmapping, Aerogrid, IGN, IGP, swisstopo, and the GIS User Community



**Selected Land Uses**

- Agriculture or Irrigated
- Urban
- Industrial or commercial units
- Mineral extraction sites
- Olive groves

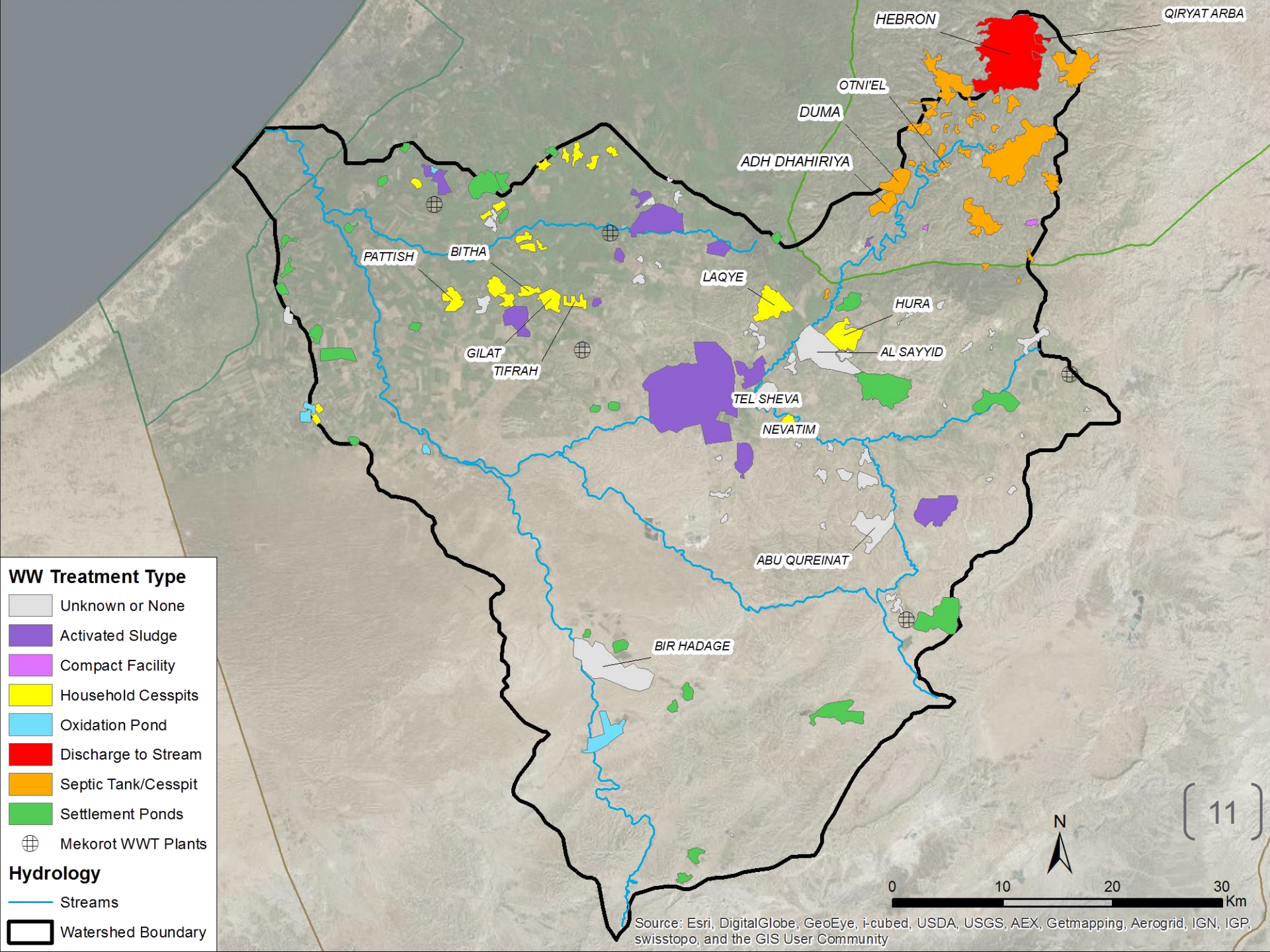
**Hydrology**

- Streams
- Watershed Boundary

**Political Boundaries**

- 1967 Green Line and Gaza
- Israel Borders

Source: Esri, DigitalGlobe, GeoEye, i-cubed, USDA, USGS, AEX, Getmapping, Aerogrid, IGN, IGP, swisstopo, and the GIS User Community

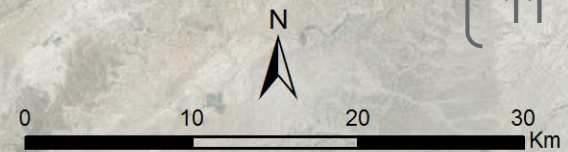


**WW Treatment Type**

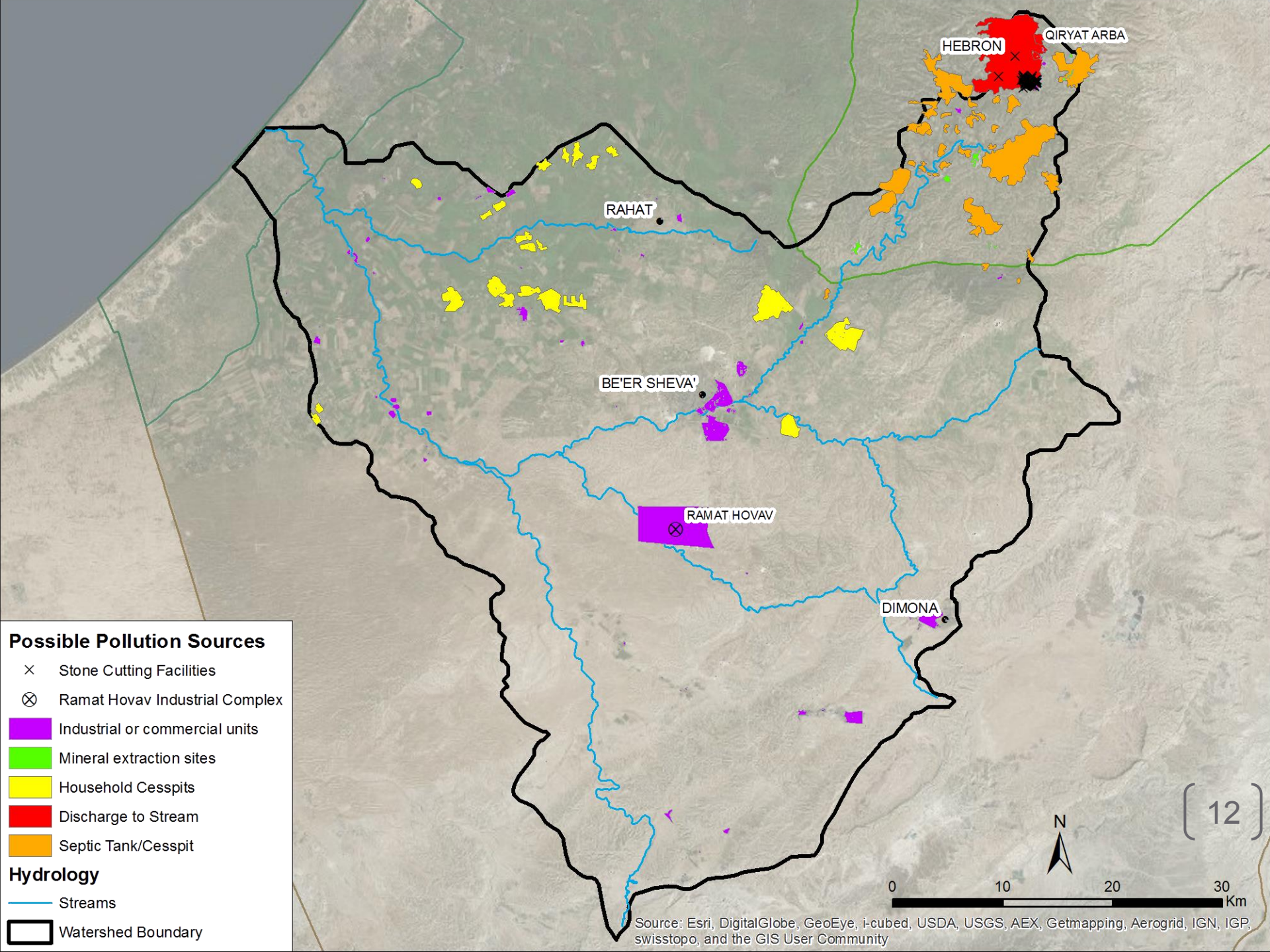
- Unknown or None
- Activated Sludge
- Compact Facility
- Household Cesspits
- Oxidation Pond
- Discharge to Stream
- Septic Tank/Cesspit
- Settlement Ponds
- Mekerot WWT Plants

**Hydrology**

- Streams
- Watershed Boundary



Source: Esri, DigitalGlobe, GeoEye, i-cubed, USDA, USGS, AEX, Getmapping, Aerogrid, IGN, IGP, swisstopo, and the GIS User Community



HEBRON QIRYAT ARBA

RAHAT

BE'ER SHEVA'

RAMAT HOVAV

DIMONA

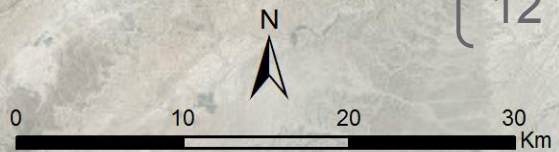
12

**Possible Pollution Sources**

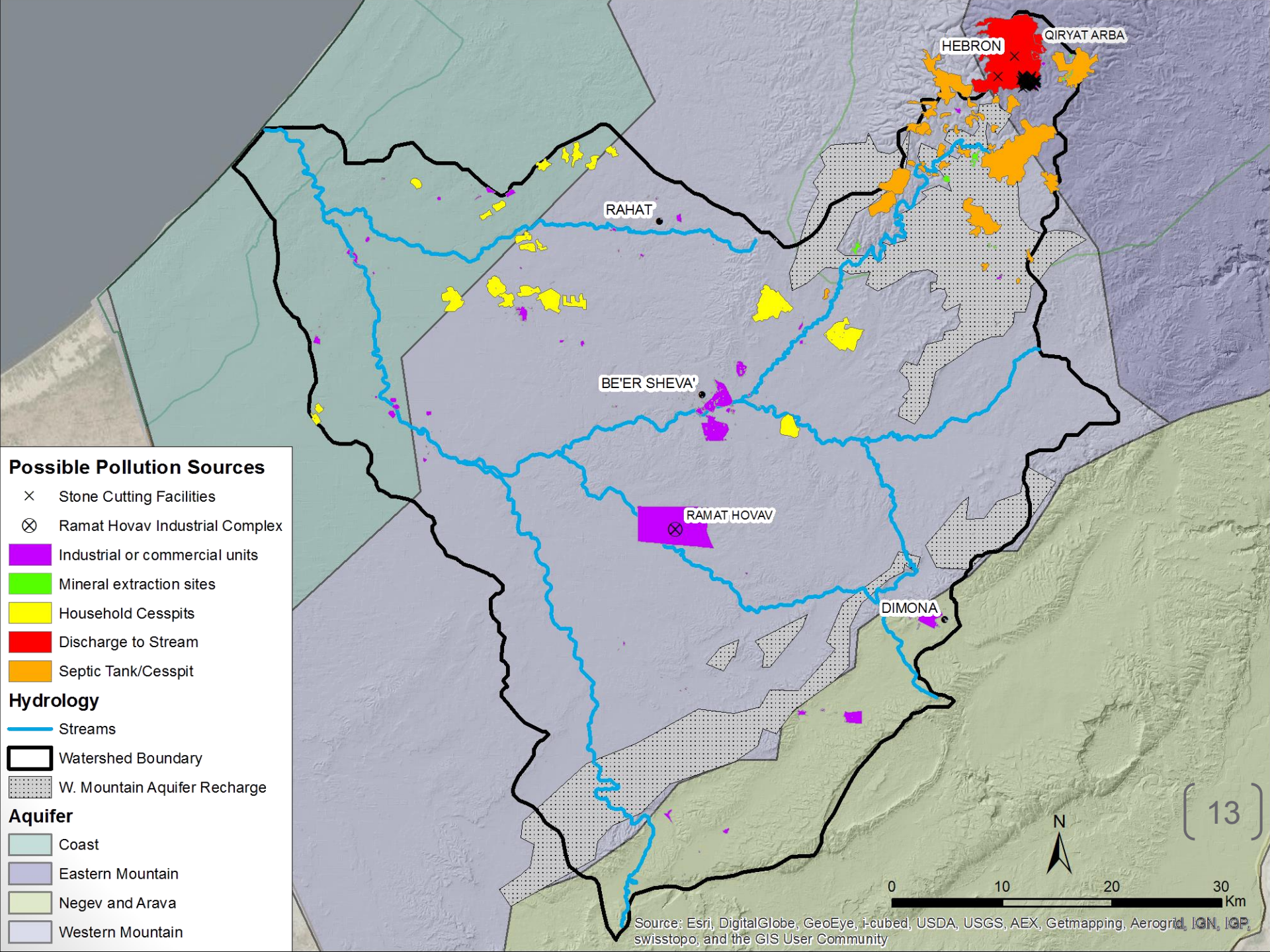
- × Stone Cutting Facilities
- ⊗ Ramat Hovav Industrial Complex
- Industrial or commercial units
- Mineral extraction sites
- Household Cesspits
- Discharge to Stream
- Septic Tank/Cesspit

**Hydrology**

- Streams
- Watershed Boundary



Source: Esri, DigitalGlobe, GeoEye, i-cubed, USDA, USGS, AEX, Getmapping, Aerogrid, IGN, IGP, swisstopo, and the GIS User Community



**Possible Pollution Sources**

- × Stone Cutting Facilities
- ⊗ Ramat Hovav Industrial Complex
- Industrial or commercial units
- Mineral extraction sites
- Household Cesspits
- Discharge to Stream
- Septic Tank/Cesspit

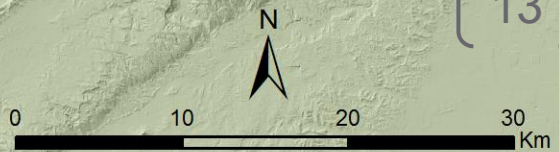
**Hydrology**

- Streams
- Watershed Boundary
- W. Mountain Aquifer Recharge

**Aquifer**

- Coast
- Eastern Mountain
- Negev and Arava
- Western Mountain

( 13 )



Source: Esri, DigitalGlobe, GeoEye, i-cubed, USDA, USGS, AEX, Getmapping, Aerogrid, IGN, IGP, swisstopo, and the GIS User Community