

# Arava Institute for Environmental Studies



## Organizational Structure 2020

# Arava Institute and Subsidiaries

Friends of the Arava  
Institute for  
US 501 (C3)

Arava Institute for  
Environmental Studies  
Registered Association

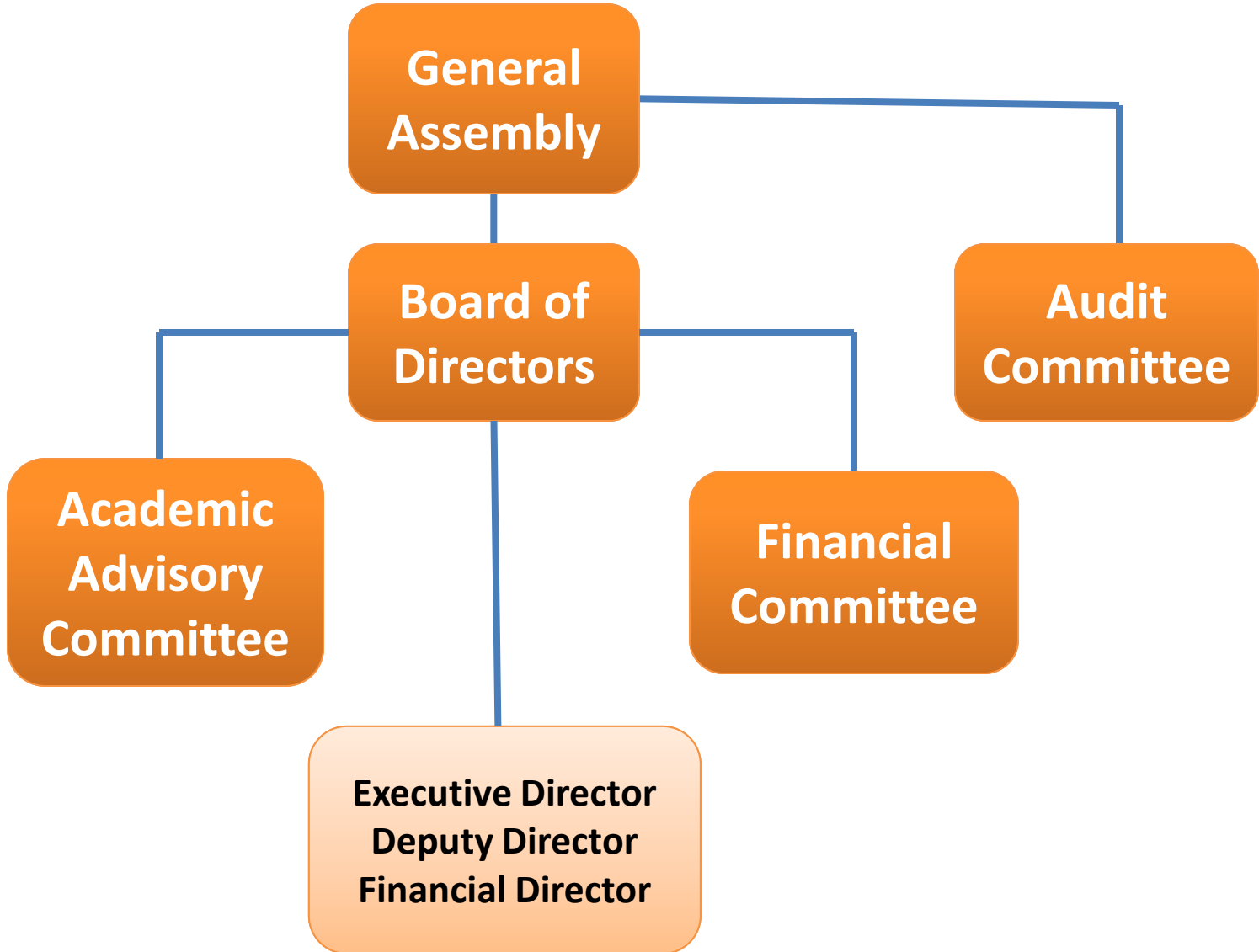
Arava Institute  
Research &  
Development – LTD  
(100%)

Capital Nature LTD  
(0.87% -> 0.78%)

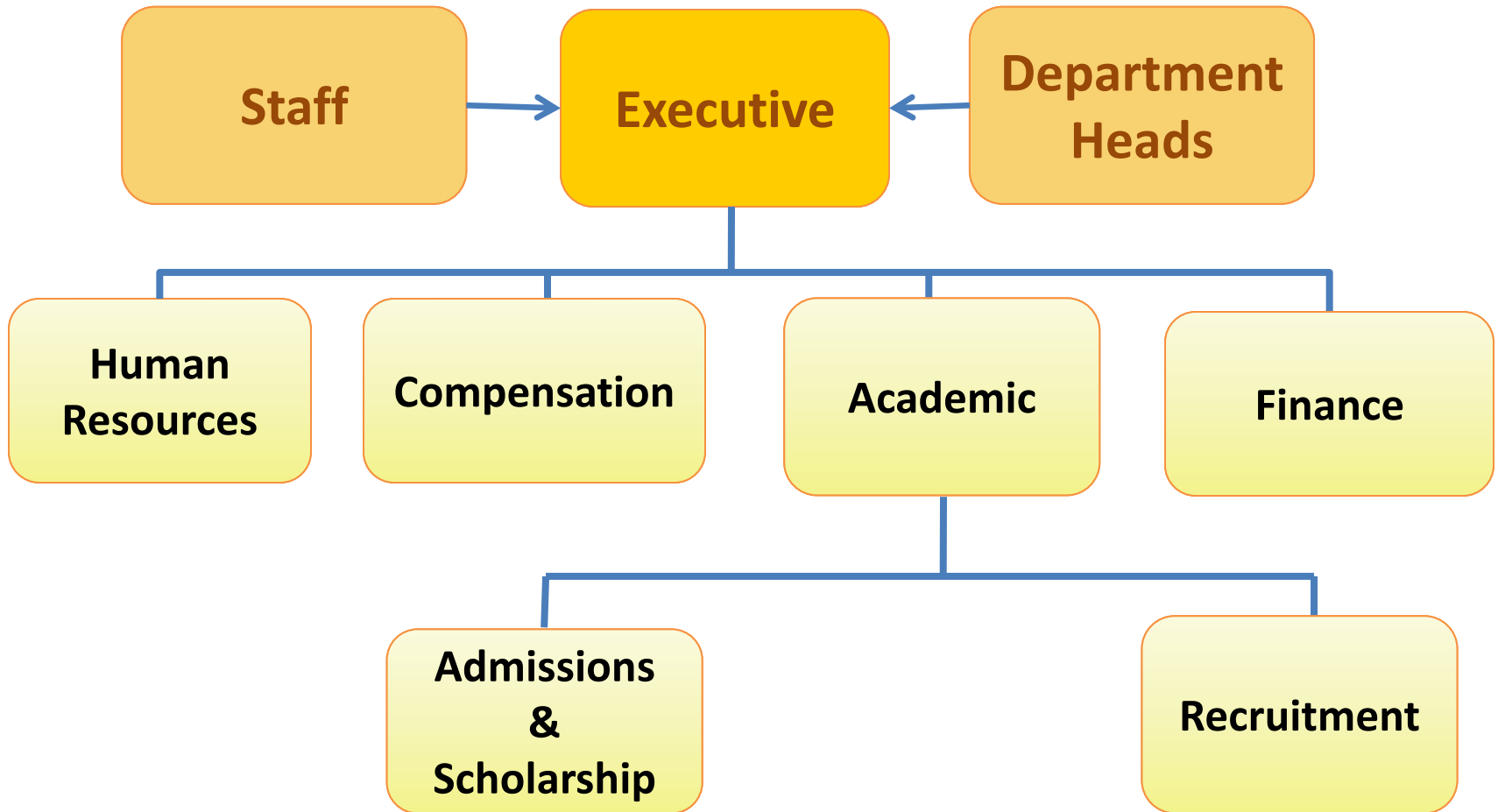
Not yet established  
LagunaTech - LTD  
(50%)

Arava Power  
Company – LTD  
(1%)

# Arava Institute Governance Structure



# Arava Institute Committee & Staff Forums Structure



# AIES Department Structure

**Administration**

**Academic  
Programs**

**Research  
Programs**

**Alumni  
Programs**

**Track II  
Environmental  
Forum**



**Finance &  
Accounting  
Department**

**Development  
Department**

**Communications  
Department**

**Short  
Programs**

**AIES Administration**

**David Lehrer  
Executive Director**

**Eliza Mayo  
Deputy Director**

**Roy Kagan  
Finance Director**

**Cathie Granit  
Study Programs  
Director**

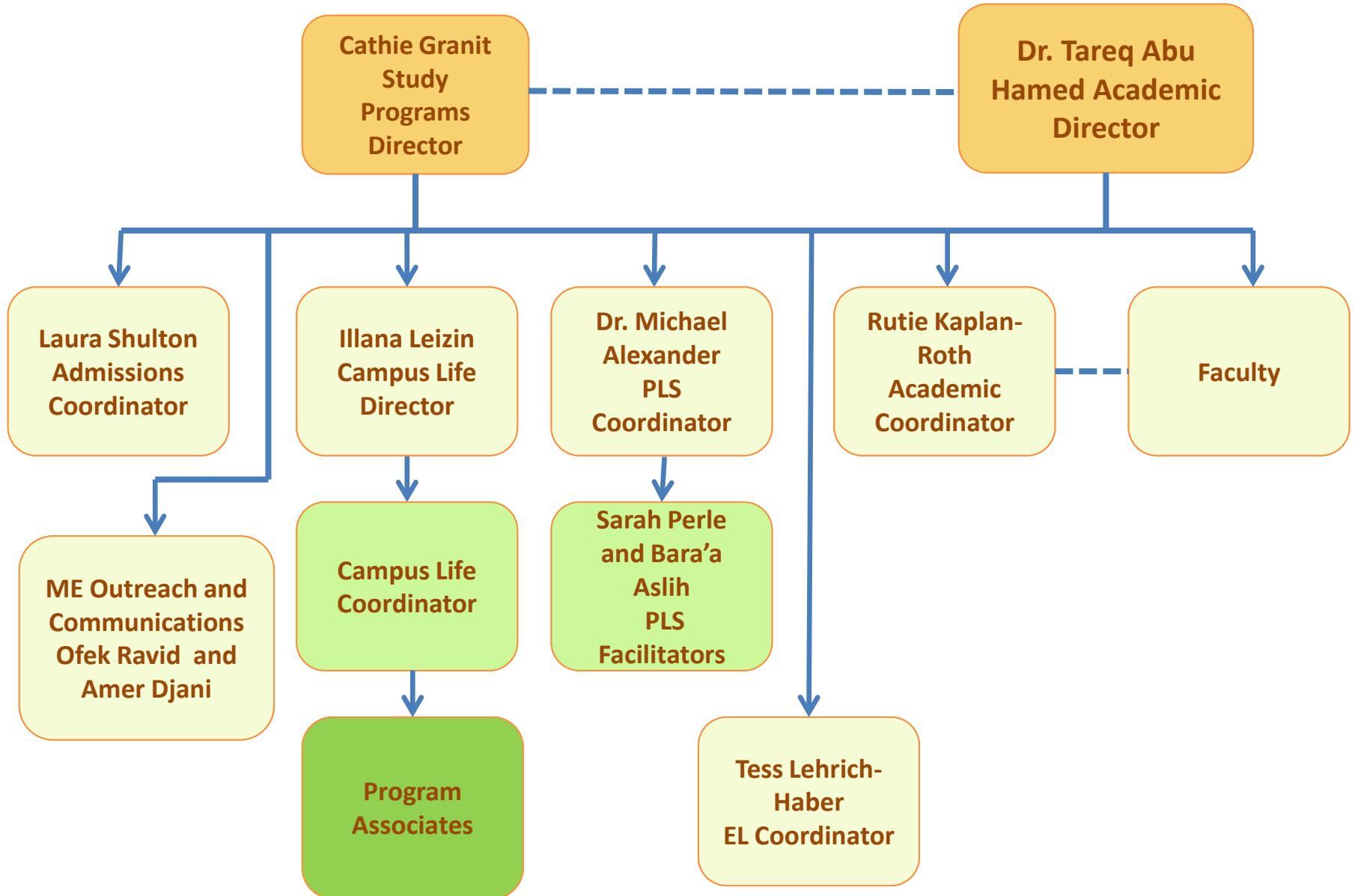
**Tareq Abu  
Hamed  
Academic  
Director**

**Gilat Berger  
Administrative  
Associate**

**Yossi Spitz  
Information  
Technology**

**Housekeeping**

# Academic Programs



**Research Programs**

**David Lehrer  
Executive Director**

**Dr. Elaine  
Solowey &  
Yair Wahle  
CSA Co-  
Directors**

**Dr. Clive  
Lipchin  
CTWM  
Director**

**Dr. Miri  
Lavie-  
Neeman  
CASE  
Director**

**Dr. Tareq  
Abu  
Hamed  
CREEC  
Director**

**Dr.  
Suleiman  
Halasah &  
Rina  
Kedem  
JICCER Co-  
Directors**

**Ella  
Fuksbrauner  
CTWM  
Coordinator**

**Jozsef Kadar  
Research  
Assistant**

**William  
Weissinger  
Park  
Manager**



**Alumni Programs**

**Eliza Mayo**  
Deputy Director

**Alumni**  
Coordinator

**Track II Environmental Forum**

**David Lehrer**  
Executive Director

**Dr. Deborah Sandler**  
Track II Chair

**Shira Kronich**  
Strategy and  
Operations  
Manager  
Track II

**Hannah Kadish**  
Track II  
Administration  
Associate

**Michael Johnson**  
Track II  
Compliance  
Associate

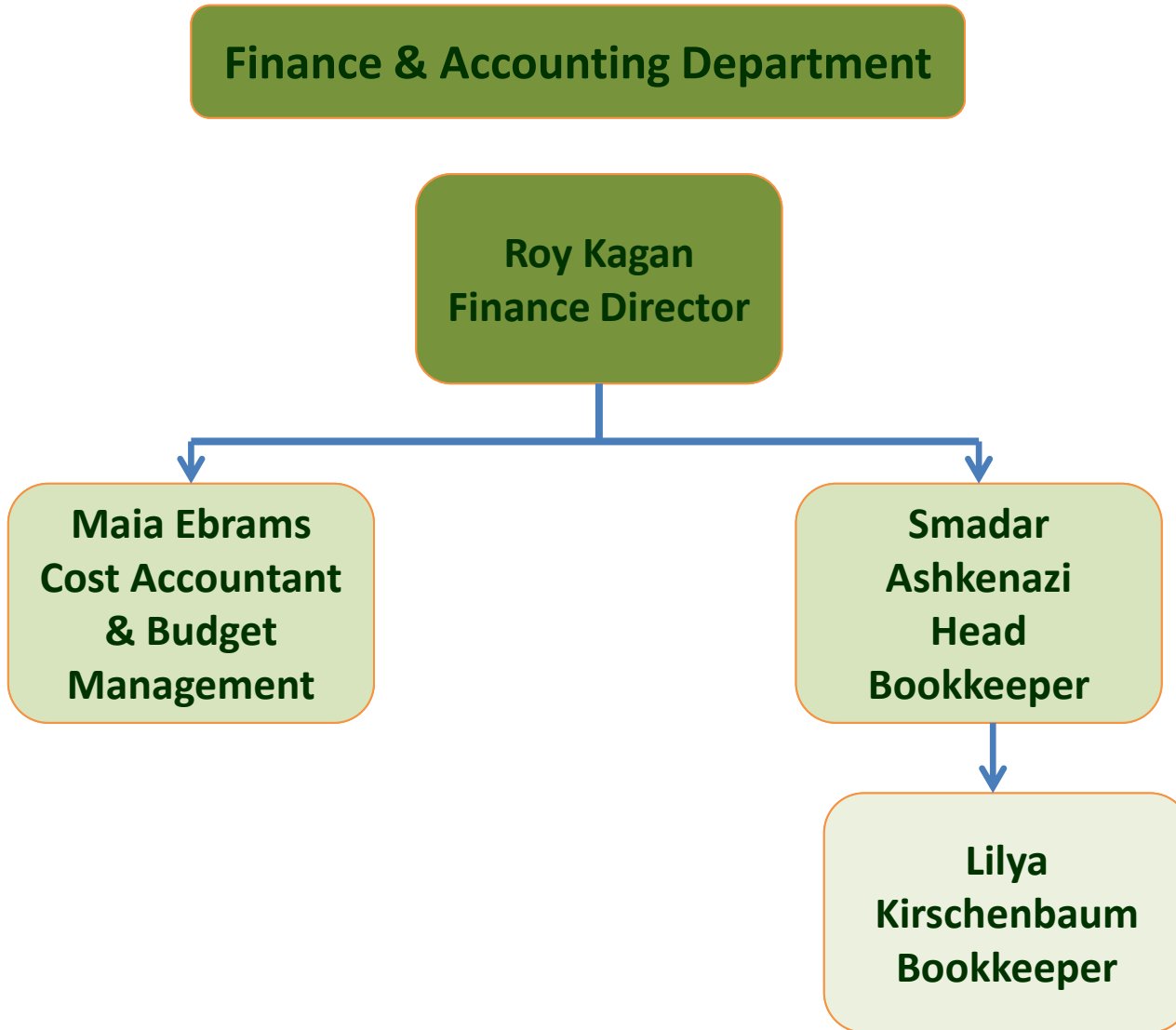
# Finance & Accounting Department

**Roy Kagan**  
Finance Director

**Maia Ebrams**  
Cost Accountant  
& Budget  
Management

**Smadar  
Ashkenazi**  
Head  
Bookkeeper

**Lilya  
Kirschenbaum**  
Bookkeeper



# Development Department

```
graph TD; A[Development Department] --> B[David Lehrer Executive Director]; A --> C[Eliza Mayo Deputy Director]; B --> D[Diana Spinrad Development Director]; C --> D; D --> E[Abby Lutman Grant Writer & Scientific Editor]; D --> F[Michael Johnson Grant Writer]; D --> G[Dagan Ben Zvi Hebrew Grant Writer];
```

**David Lehrer**  
Executive Director

**Eliza Mayo**  
Deputy Director

**Diana Spinrad**  
Development  
Director

**Abby Lutman**  
Grant Writer &  
Scientific Editor

**Michael  
Johnson**  
Grant Writer

**Dagan Ben Zvi**  
Hebrew  
Grant Writer

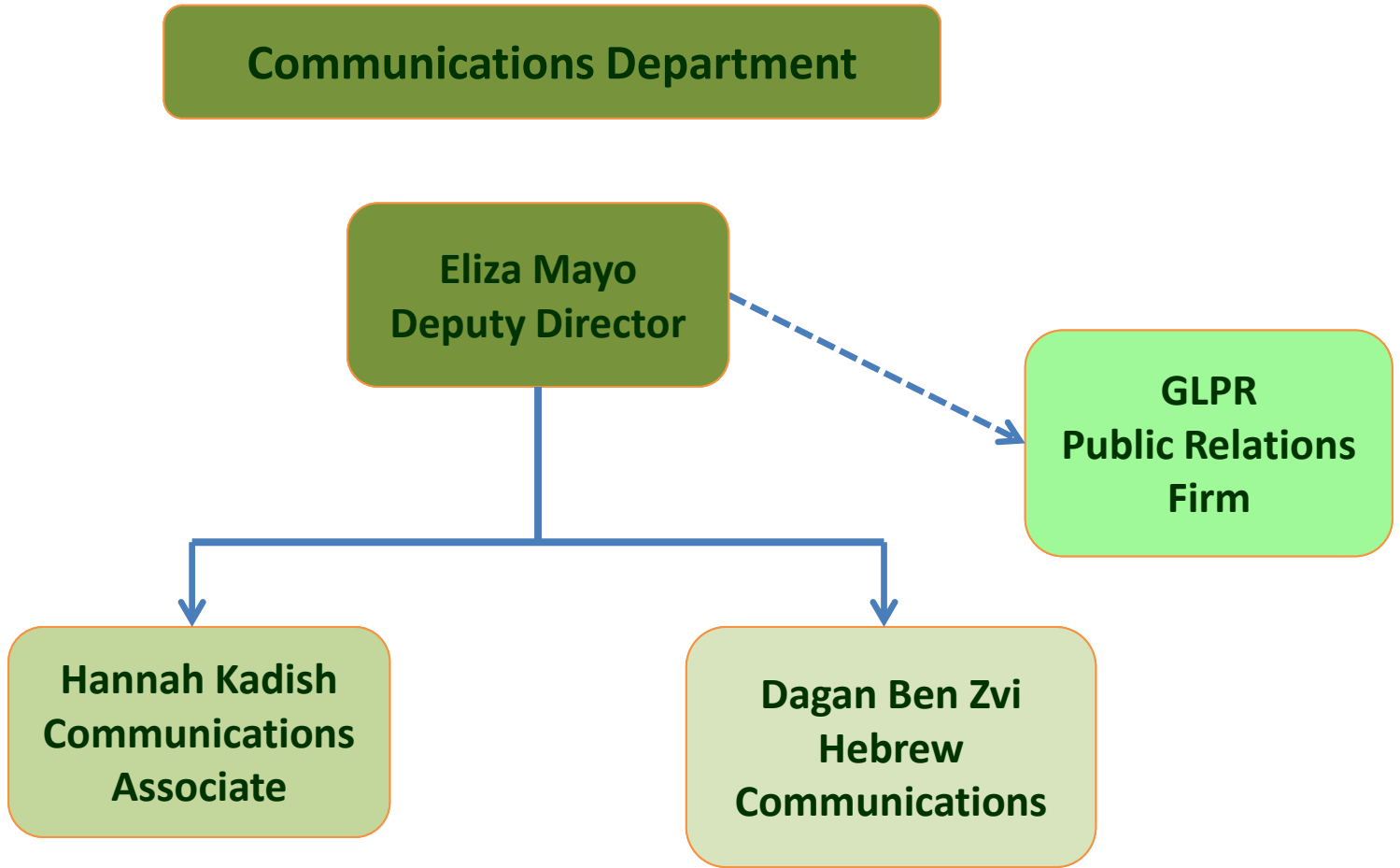
# Communications Department

**Eliza Mayo  
Deputy Director**

**GLPR  
Public Relations  
Firm**

**Hannah Kadish  
Communications  
Associate**

**Dagan Ben Zvi  
Hebrew  
Communications**



# Short Programs Department

**David Lehrer**  
Executive Director

**Eliza Mayo**  
Deputy Director

**Avigail Ben  
Yohanan**  
Short Programs  
Director

**Reut Parnes**  
Short Programs  
Associate

**Rotem Meiri**  
Visas & Permits

